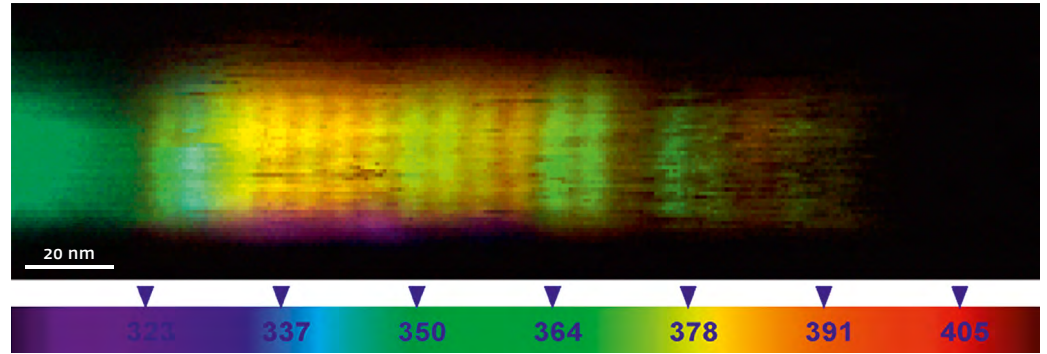


## Selected Applications / CL-STEM

### Nanophotonics

Imaging AlGaIn/GaN nanodisks with the Mönch 4107 CL-STEM add-on



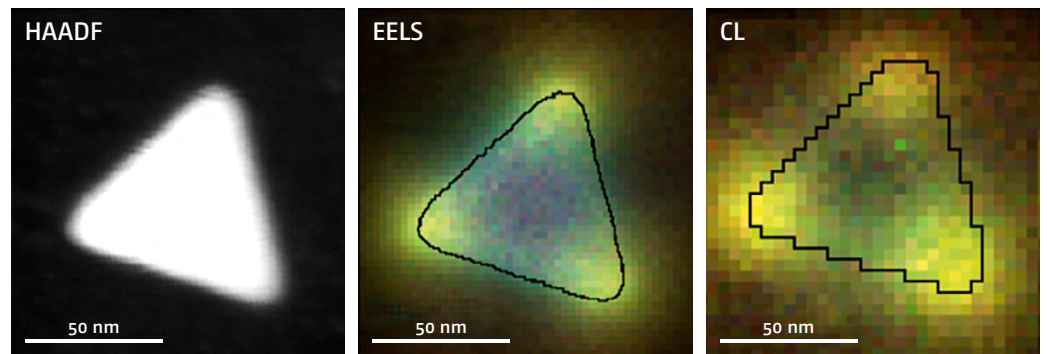
Courtesy of Dr. Mathieu Kociak,  
CNRS-LPS, Orsay (France)

“Unveiling Nanometer Scale Extinction and Scattering Phenomena through Combined Electron Energy Loss Spectroscopy and Cathodoluminescence Measurements”

*Nano Letters* 15, 1229-1237 (2015)

### Nanophotonics

Imaging plasmon modes in metal nanoparticles with the Mönch 4107 CL-STEM add-on

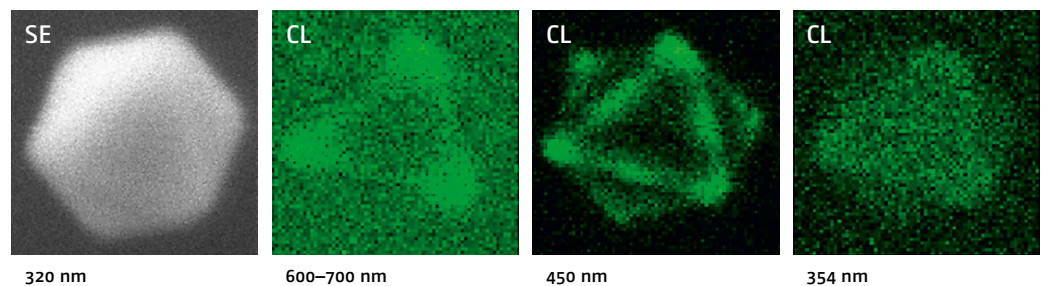


Courtesy of Dr. Mathieu Kociak,  
CNRS-LPS, Orsay (France)

## Selected Applications / CL-SEM

### Plasmonics

Plasmon modes in metallic nanostructures measured with Allalin 4027



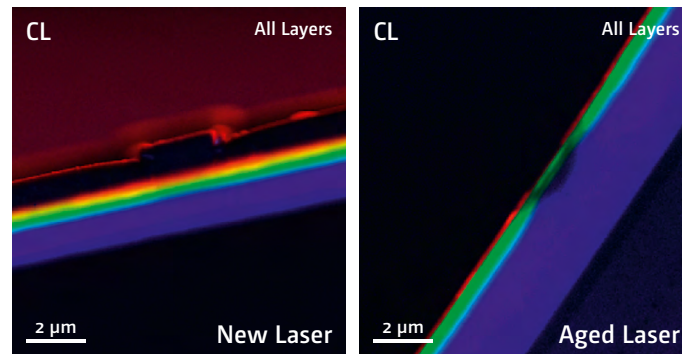
Courtesy of Prof. Xing Yi Ling,  
Nanyang Technical University  
(Singapore)

“Precision Synthesis: Designing Hot Spots over Hot Spots via Selective Gold Deposition on Silver Octahedra Edges”

*Small* 10, 4940-4950 (2014)

### Failure analysis

Ageing effects in InGaN/GaN green laser diodes measured with Rosa 4634

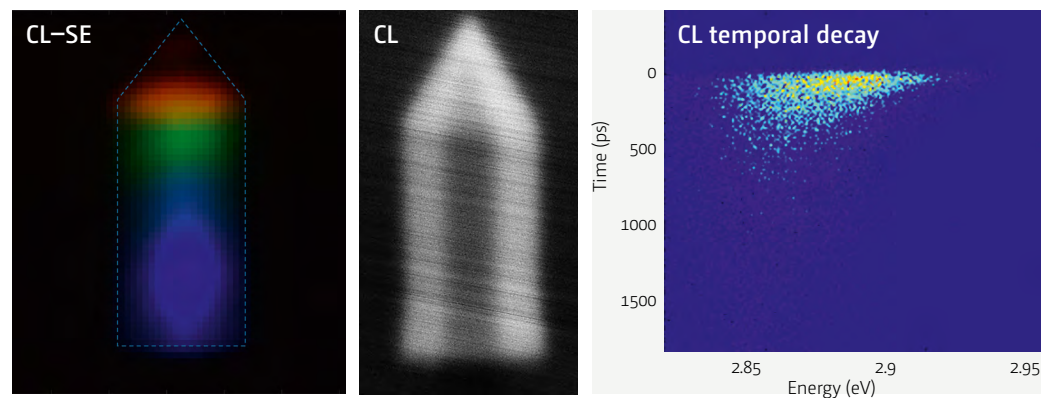


Collaboration Profs. Matteo Meneghini & Enrico Zanoni, University of Padova, Italy

“Nanoscale Investigation of Degradation and Wavelength Fluctuations in InGaN-based Green Laser Diodes”  
*IEEE Transactions on Nanotechnology* (in press)

### Time-Resolved CL

Imaging the carrier dynamics in a single InGaN/GaN NW measured with Allalin 4027 Chronos

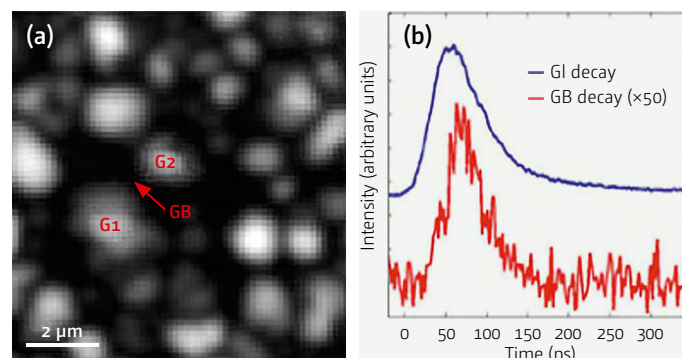


Courtesy of Dr. Gwénoél Jacopin, EPFL, Switzerland

“Excitonic Diffusion in InGaN/GaN Core-Shell Nanowires”  
*Nano Letters* 16, 243 (2016)

### CdTe photovoltaics

Combined CW and TRCL study of grain passivation measured with Allalin 4027 Chronos



Collaboration Prof. Budhika Mendis, University of Durham, UK

“Long lifetime hole traps at grain boundaries in CdTe thin-film photovoltaics”  
*Physical Review Letters* 115, 218701 (2015)